

# Warwick Preparatory School

WELCOME TO RECEPTION

## KEY STAFF

Mrs Dodsworth – Head  
Mrs Alder – Deputy Head  
Mrs Smeeton Head of Pre-Prep

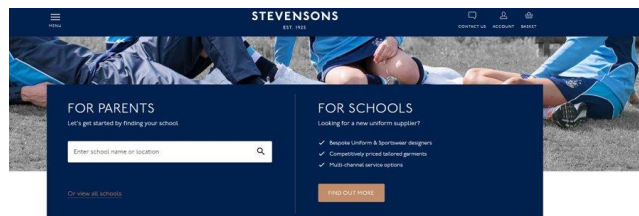
Mrs Hannah Earl (RHE) Reception  
Co-ordinator

Mrs Emma Burbidge (REB)  
Miss Hannah Dickson (RHD)  
Mrs Sam Jones (RSJ)

Mrs Julie Clutton  
Miss Emily Duffy  
Miss Alice Day  
Mrs Elizabeth Graves  
Mr Tom Gibson

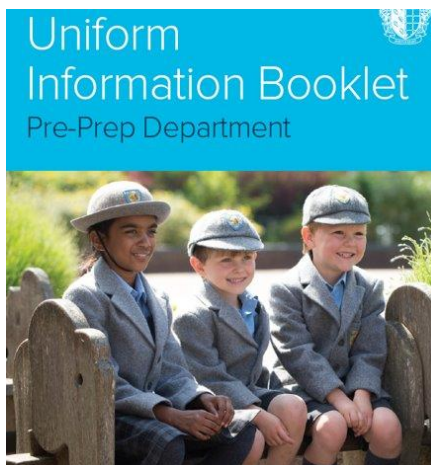
Mrs Payton - Nurse





**TRUSTED BY OVER 550 SCHOOLS**

Stevensons is the largest independent school uniform and sportswear provider in the UK, serving over 550 schools nationwide. Selling quality school uniforms, sportswear and sports equipment through our various supply channels be it high street shops, on-line, on-campus shops, pop-up shops or direct to school. [Find out more](#)



# UNIFORM

- Please encourage the children to be smart.
- Stevensons is the new supplier of all Warwick Prep School uniform. <https://www.stevensons.co.uk/> Shop: email: [Warwick@stevensons.co.uk](mailto:Warwick@stevensons.co.uk)
- The new summer dress will not be available until summer term 2023.
- There is a 2 year transitional phase – new day wear uniform will be compulsory by September 2024.
- The WISF School Shop will be open for appointments throughout the summer break for 'try before you buy' service or click and collect.
- Please refer to the uniform booklet for details.

\*\*\*\*\*

- Hats or caps must be worn with the blazer/coat when entering and leaving school.
- Full PE kit, art apron and waterproof all-in-one in school at all times.
- Hair tied back in blue, black or brown accessories.
- No jewellery or nail varnish.
- Water bottle should be in school every day.

# UNIFORM



King's High School  
Warwick Preparatory School

## RECEPTION

Blazer  
Poly/Viscose



Knitwear  
Cotton / Acrylic



Polo  
65% Polyester  
35% Cotton



Shorts  
65% Polyester  
35% Viscose



Tunic  
65% Polyester  
35% Viscose



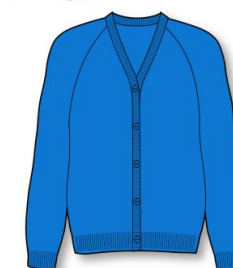
Dress  
Bedford check  
67% Polyester  
33% Cotton



Navy 3 patch pocket blazer



Blue V-neck jumper or cardigan



Grey bermuda shorts



Tartan V-Neck tunic BA353T



Summer Dress - Bedford check



Navy felt cap with school badge



Navy hat with school badge



Sky blue poloshirts S/S or L/S



Grey socks with two navy stripes



Grey tights



OUR SCHOOL HAS A NON GENDER SPECIFIC UNIFORM POLICY. ANY GENDER OF CHILD MAY WEAR ANY ITEM OF UNIFORM

STEVENSONS

[www.stevensons.co.uk](http://www.stevensons.co.uk)

# THE SCHOOL DAY

Times	Subject
7.45am	Before school supervision.
8.30am	Registration
8.50am	Morning Activities
10:10 am	Water/Milk and snacks ( <a href="http://www.coolmilk.com">www.coolmilk.com</a> ) Fruit is available.
10.40am	Continuation of morning activities
11.50am	Lunch
12.30pm	Playtime
1.10pm	Afternoon Activities
3.30pm	Home Time. RHD and RHE collected from Door B REB and RSJ collected from Door J

# BEFORE AND AFTER SCHOOL PROVISION

## Before School

- School opens at 7.45am
- 7.45am – 8.30am Supervised Open Area/Playground
- 8.30am – 8.50am Registration

## After School

- 3.30pm End of the school day. ASC children collected from the classroom
- 4.00pm – 4.25pm Short After School Session
- 4.00pm – 5.45pm Long After School Session
- Booking System CHQ

# THE FIRST FEW DAYS

Monday 5th September

Group 1 – 8:30 – 11:30

Group 2 – 12:30 – 3:30

Tuesday 6th September

Group 2 – 8:30 – 11:30

Group 1 – 12:30 – 3:30

Wednesday 7th September

All children – 8:30 – 11:30 (optional afternoon session – please book with your child's form teacher by 5.9)

Thursday 8th September

All children - full school day

Friday 9th September

All children – 8:30 – 12:30 (optional afternoon session – please book with your child's form teacher by 7.9)

# PREPARING FOR SEPTEMBER

- Use the list provided tonight to help organise belongings that are coming to school – please ensure that all belongings are named!
- Please sew a loop of ribbon to art and lunch aprons – this helps us to hang them up but also helps your child to easily identify their own aprons.
- Encourage your child to practise putting on/taking off their school uniform, PE kit and forest school waterproof suits and wellies. Check that they know which shoe goes on which foot!
- Our first topic will be 'Who Am I?' - please add photos to an envelope as detailed.



# THE CURRICULUM

- The Early Years curriculum is made up of seven areas of learning. These consist of three prime areas and four specific areas.
- Prime Areas are:
  - Personal, Social and Emotional Development
  - Physical Development
  - Communication and Language
- Specific Areas are:
  - Literacy
  - Mathematics
  - Understanding the World
  - Expressive Arts and Design
- Each area of learning and development will be implemented through a mixture of planned and child-initiated activities



# SEESAW



*Seesaw*

- Seesaw is our online learning platform used to share events both in school and at home:
- Pupil observations
- Round-up of class activities
- Homework/Wow moments/family activities
- Messages home

# FOREST SCHOOL

- Each class has a weekly session at forest school. Sessions link to class topics.
- Sessions led by Mrs Lees.
- New forest school uniform to wear this year.



# REWARDS AND SANCTIONS



## Good Behaviour

- Fair Rules
- House Points
- Star in the Jar
- Stickers
- Special Praise

## Oops Card



## When Things go wrong....

- Oops Card
- Encouragement Card
- Report

## Encouragement Card

Name: \_\_\_\_\_

Form: \_\_\_\_\_ Week Beginning: \_\_\_\_\_

Please complete the 'Encouragement Card' and include any positive feedback.

Target 1 \_\_\_\_\_

Target 2 \_\_\_\_\_



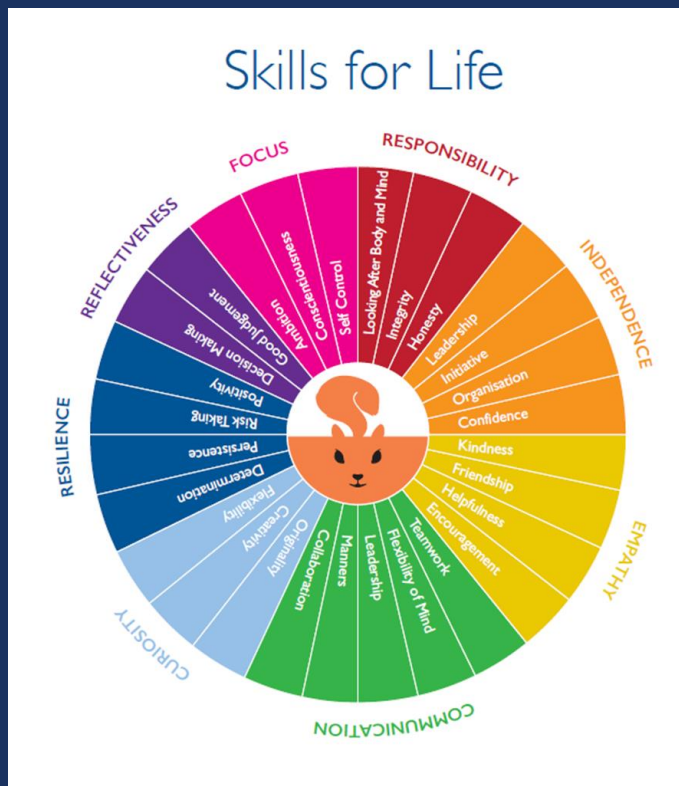
Parent's Comments

Parent's Signature

Teacher's Signature



# SKILLS FOR LIFE



Over the course of the year,  
record specific activities you have  
carried out that have helped you  
develop particular skills.



I have developed my **Resilience** by...

Signed .....

I have developed my **Curiosity** by...

Signed .....

I have developed my **Reflectiveness** by...

Signed .....

I have developed my **Focus** by...

Signed .....

Each time you complete a box,  
share it with your form teacher.  
Once you have completed all  
eight you will receive a badge.



I have developed my **Communication** by...

Signed .....

I have developed my **Empathy** by...

Signed .....

I have developed my **Independence** by...

Signed .....

I have developed my **Responsibility** by...

Signed .....

# ADDITIONAL PLANNER PAGES

- Fundamental British Values
- My Personal Network

## What are Fundamental British Values?

### Individual Liberty

I am allowed to have my own opinion and can share it as long as I am not being offensive or rude. I let other people have their say too.



### Democracy

I am allowed to have a say and make decisions that affect me at Warwick Prep School. I know that in Britain, people are voted into power.



### Rule of Law

I know right from wrong. I know what is legal and illegal. I know that rules and laws are in place to protect me and to keep me safe.



### Mutual Respect

I understand that everyone is free to express themselves in their own personal way. I will listen to others as I would like to be listened to.



### Tolerance of those of different faiths and beliefs

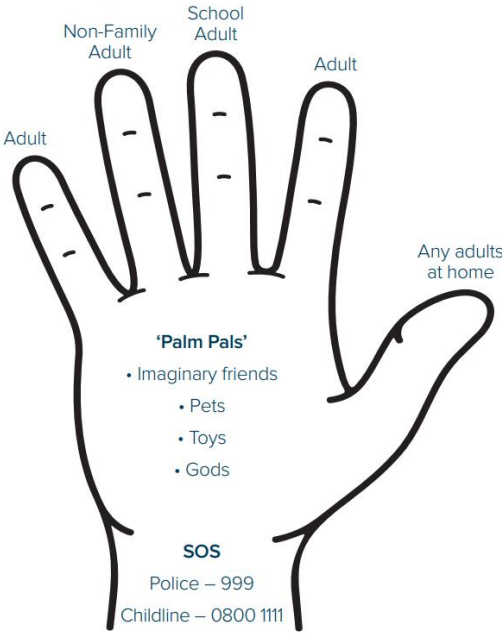
I know that people have faiths and beliefs different to my own and I know that some people have no faith. I will listen to other people's views and respect their opinions.



## Fundamental British Values

Fundamental British Value	How have you demonstrated this?	Staff/Parents Initials
Individual Liberty		
Democracy		
Rule of Law		
Mutual Respect		
Tolerance of those of different faiths and beliefs		

## My Personal Network



During your Protective Behaviours lessons at Warwick Prep, you will be asked to think of trusted adults that you can record on your personal network hand. These adults are people you feel you can talk to if you ever have a worry or a concern that you want to share or that you need help with.

Remember – you can talk to someone about anything, even if it feels awful or small.

# PUPIL WELFARE – ONLINE SAFETY



- Online Safety or E-Safety falls under Digital Literacy and is taught across the curriculum with specific focus in Computing and PSHEE lessons.
- We are responsible for educating the children in these areas, but also ask parents to work in partnership with us to help guide our children into making the right digital choices.
- Here are some **“Must Visit”** sites that provide advice, guidance and great digital ideas.

[thinkyouknow.co.uk](http://thinkyouknow.co.uk)  
[commonsensemedia.org](http://commonsensemedia.org)

[net-aware.org.uk](http://net-aware.org.uk)  
[childnet.com](http://childnet.com)

[saferinternet.org.uk](http://saferinternet.org.uk)



- Cyber Cyril also produces a regular slot in Squirrel News with helpful links and guidance.
- <https://www.youtube.com/watch?v=sz4EyUMUTro>
- <https://www.bing.com/videos/search?q=nsppc+share+aware+clip&view=detail&mid=55485B4D8E1926C9D96A55485B4D8E1926C9D96A&FORM=VIRE>

# Online Safety – A parent's role

**WPS AUP – Signed by Parents: “I will support the school by promoting safe use of the Internet, school website and digital technology at home. I understand that overall it is my responsibility to monitor my child's use of the Internet at home, know the content they are accessing and inform the school of any concerns.”**

- Europol shows significant increases in activity relating to child online abuse and exploitation, including a rise in the number of referrals.
- The Internet Watch Foundation (IWF) received an increase of over 50 per cent in reports of online child abuse material over the last year.
- Online abuse ‘may take place through social media, online games, or other channels of digital communication. Research suggests that online abuse can have as big an impact on young people as abuse that takes place face-to-face.’ Not just images – can be financial too. Gifts, trades, likes etc.
- Guidance for parents:
  - [NSPCC Data review 2020](#)
  - [NSPCC Parent's Guide](#)
  - [Childnet Parent's Guide](#)
  - [Internet Matters – Parent's Guide](#)



# PUPIL WELFARE



- **Mental Well-Being**  
School Counsellor – Helen Webb, who supports us 1.5 days per week.
- **Parent Library**  
A library for parents to access on a variety of difficult subjects such as, bereavement, illness, self-harm, eating disorders and internet safety to name but a few.
- **Medical Provision**  
Illness  
Injuries  
Medicines



# SCHOOL COMMUNICATION



- **School Planners** to assist organisation/means of communication - please check daily.
- **Contact with Form Teacher** – email [parents@warwickprep.com](mailto:parents@warwickprep.com)
- **Learning Journeys** - download from school website [www.warwickprep.com](http://www.warwickprep.com)
- **Pupil Absence** – school office to be notified by 10am of a child's absence due to illness each day of absence. This can be done by phone or e-mail to [parents@warwickprep.com](mailto:parents@warwickprep.com)
- **After School Care** – bookings for ASC should be made no later than midday on the day before the day that care is required. Bookings can be made by phone or e-mail to [asc@warwickprep.com](mailto:asc@warwickprep.com) Please note additional charges for collection after 5.45pm will be £10 per 15 minutes.
- **Calendar** – please check the calendar on our website regularly for latest information
- **Activities** – Please check through CHQ for details of the dates and times activities will be taking place
- **Parent Handbook** – contains a wealth of information about the school and its procedures. Available to download.

# WPSA

## What does WPSA do?

### Organises Events



### Gives back to the School



### Runs the second hand school uniform shop



WPSA is a committee of parents and teachers willing to devote a little spare time to further the great opportunities Warwick Prep offers our children.

Please do take a handout before you leave for more details as to how you can get involved.